

Longboard®

Mayne Coatings Corp.
27575 50th Ave
Langley, BC Canada
V4W 0A2

w. maynecoatings.com
t. 604.607.0198
f. 604.607.6680
e. info@maynecoatings.com

Longboard® Cladding Products

Longboard® is extruded aluminum alloy 6063 T5, the typical alloy used for architectural products, powder coated with a wood grain or solid colour finish.

Longboard products come in three different profiles.

Standard length of panels is 24 ft.

Gauge of Aluminum:

4" V Groove: 1.57 mm/0.06"

6" V-Groove: 1.57mm/0.06"

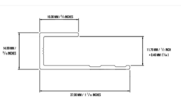
6" Channel: 1.78mm/0.07"

Longboard® Components

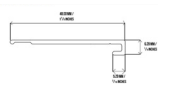
Longboard® products has a number of components available to complete installation for inside/outside corners, window and door trim, starter strips, expansion joints, vent strips and a finishing cap and base for the last run of siding.



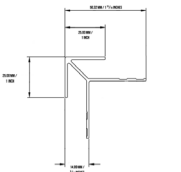
Longboard® profiles are hollow-backed and the clips fulfill the "loosely fastened" criteria of the NBCC Part 9 requirements by providing a continuous airspace for the full width of the panel and increased management of thermal expansion and contraction. Clips are fastened 32" on center resulting in a quicker install, see install instructions for details.



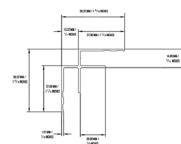
J Track



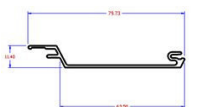
Wide Starter Strip



Outside Corner



Inside Corner



2.5 Vent Strip



6" V Groove



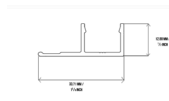
6" Channel



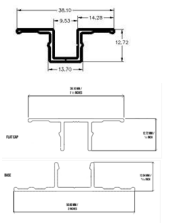
4" V Groove



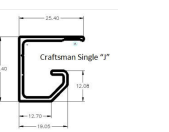
Finishing Cap and Base



U Cap and Base



Craftsman Single J Trim



Craftsman Double J Trim

Longboard® Finishes

The pre-treatment chemicals chosen by Mayne Coatings Corp. is the E-CLPS Chrome Free five stage aluminum pretreatment system, referred to as the Alluminate© Process. Our Alluminate© Process complies with AAMA 2603 AAMA 2604 and AAMA 2605 Superior Performance Standard and meets EPA, OSHA, State and Local environmental requirements and contains no chromates, cyanides or other heavy metals. Waste treatment is usually a simple pH neutralization and disposal to the sanitary sewer.

Longboard® products uses Super Durable Powder Coatings which is a polyurethane powder coat with ink based wood grain patterns sublimated into the base powder effectively tattooing the powder. The combined effect creates all the aesthetic aspects of real wood while offering the same environmental advantages of powder coated finishes.



Longboard products are finished using the Alluminate© process is AAMA 2604/2605 certified demonstrating superior resistance to weathering, humidity and salt spray testing. AAMA 2604 certified powder coatings demonstrates a 500% improvement over AAMA 2603 in the critical areas of color and gloss retention.

Environmental Attributes

Chrome & Phosphate Free
VOC(volatile organic compounds) Free
TGIC(Triglycidylisocyanurate) Free
AAMA 2604/2605 certified

Installation

Install in accordance with manufacturer's installation instructions.

Barrier Protection: Do not install over cementitious materials, dissimilar metals or pressure treated material without adequate barrier protection.

- Install building paper horizontally on walls to receive metal siding.
- Weather lap edges 6 inches (150 mm) and ends minimum 6 inches (150 mm).
- Stagger vertical joints of each layer.
- Securely staple, nail in place.
- Fasten siding to structural supports; aligned, level, and plumb.
- Locate joints over supports.
- Install expansion control joints where indicated.
- Use concealed fasteners unless otherwise approved by Architect.
- Install soffits, siding and accessories in accordance with best practice, with all joint members plumb and true.

This document is published as an information guide only, Mayne Coatings Corp. reserves the right to change this information without notice. These drawings do not contain the full detail required for construction and must be read in conjunction with the installation instructions on www.longboardproducts.com. You should obtain architectural, engineering or other technical advice to assess the suitability of these drawings to the requirements of your particular project. Mayne Coatings Corp. and Longboard Products accepts no liability in respect to the use of this information and drawings. For complete installation instruction refer to the appropriate documentation at www.longboardsuppliers.com/installation

Mayne Coatings Corp.
27575 50th Ave
Langley, BC Canada
V4W 0A2

[w. maynecoatings.com](http://www.maynecoatings.com)
t. 604.607.0198
f. 604.607.6680
e. info@maynecoatings.com

The Longboard® Back Framing System for Continuous External Insulation

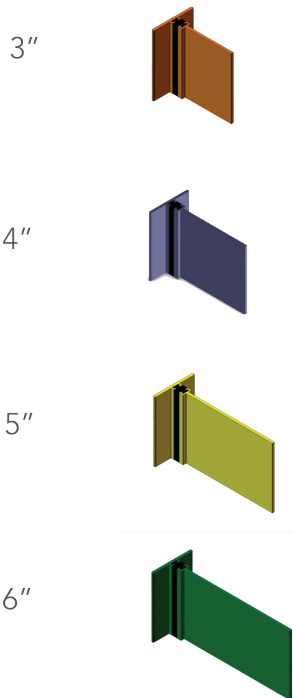
Rear Ventilated Rain Screen with T-Clip Thermally Broken Facade Framing System

The Longboard back framing system is a support system for Longboard cladding for exterior insulated walls. The thermal break in the T-Clip eliminates the reduction of the insulation value that occurs with traditional steel girts and clips.

Quick Installation

The Longboard aluminum cladding used in combination with the back framing system creates the aesthetic appearance of a wood grain siding while allowing for the installation of continuous insulation to meet the requirements of energy codes and standards. The Longboard Architectural Sub-Girt back framing allows for the easy installation of the Longboard rain screen cladding system to different types of back-up walls.

4 Clear Field Options



Designed for Longboard® Soffit & Siding
 Thermally Broken T-Clip & Aluminum
 Sub-Girt Back Framing System

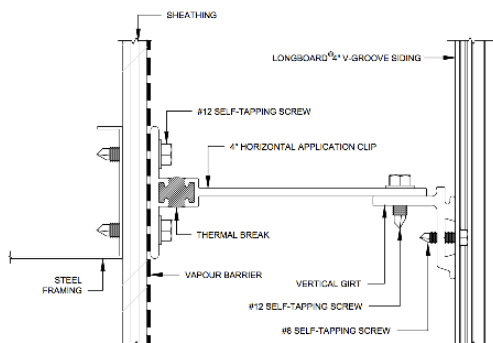
Thermally Broken T-Clip disrupts thermal bridging

Cost Effective

Suits all structures: steel stud, block, concrete, wood

Non-combustible

More info at longboardproducts.com



Visit longboardproducts.com for more information.

Details on wind loads and other product testing information can be found on our web site in the [Morrison Hershfield Thermal Performance of Longboard Architectural Sub-Girt System Cladding Clips](#) report.



General Cleaning

General surface cleaning maintenance is required to prevent dirt and other particles from accumulating. These build-ups and deposits take away from the original beauty of Longboard®. Longboard® recommends implementing a regular cleaning schedule to preserve the appearance of the product.

Clean surfaces with water and a soft brush or sponge free of debris. Avoid excessive rubbing.

If required surfaces may be cleaned with a mild detergent (pH 6-7) or cleaning agent diluted to 1:50 parts water.

Certain cleaning agents may damage the finish. If unsure, do a spot test on an area that is inconspicuous. If the solution causes any damage or changes the look of the finish, discontinue use immediately. Always observe all recommended safety precautions including appropriate skin and eye protection to prevent irritations or burns.

After cleaning occurs, surfaces should be rinsed thoroughly with water to remove any residue.

To reduce the appearance of water spots or streaking, surfaces should be wiped dry with a clean cloth.

Cleaning Practices to Avoid

Do not clean Longboard® with a pressure washer.

Do not clean Longboard® using steel wool or abrasive pads.

Do not clean Longboard® with acetone, paint thinner or removers.

Do not clean Longboard® with highly acidic or alkaline solutions.